

# ESGSAR Standard Operating Procedure

## GPS Downloading

### Units Supported

Presently, the team has one cable for all USB Garmin units and one for the Lowrance GlobalNav12. If a consistent need arises to download from other makes/models, the appropriate cables will have to be purchased.

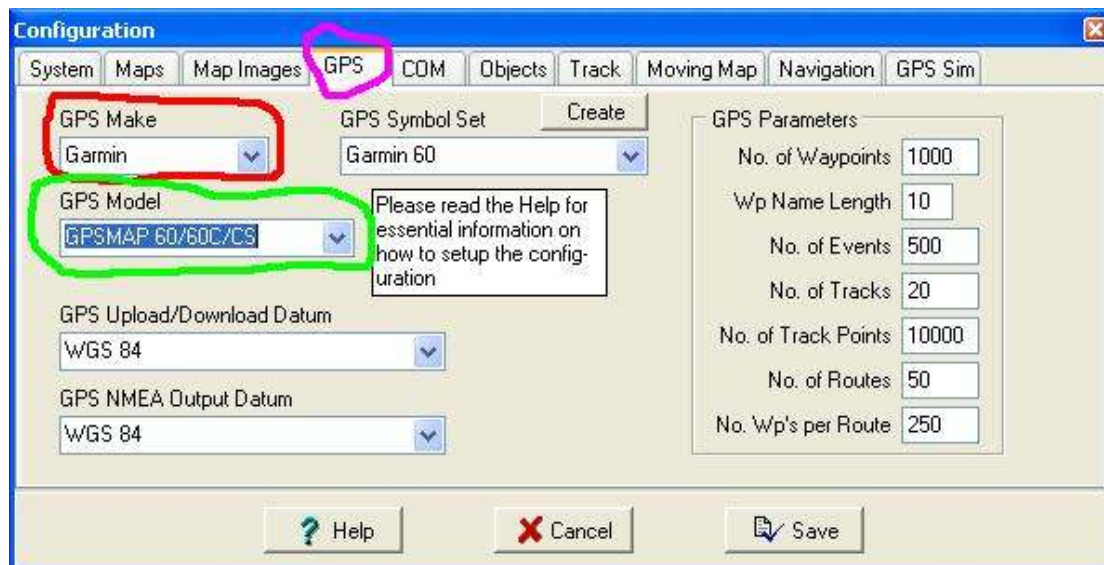
### Differences between team computers

The old team computer has both serial and USB ports. The new team computer does NOT have a serial port, necessitating the use of a USB-SERIAL adapter when downloading from the Lowrance units.

When using the USB-SERIAL adapter, set Ozi's COM port to #4. When connecting the Lowrance cable directly to the old team computer's serial port, set Ozi's COM port to #1.

### Downloading from a Garmin GPSMAP60 (or any Garmin USB GPS)

1. Plug the small end of the USB cable into the GPS unit.
2. Plug the large, flat end into a free USB port on the computer.
3. Turn the GPS on. Goto Ozi's "Configuration" menu by clicking the "File" menu and selecting "Configuration". Select the "GPS" tab from the Configuration page (pictured below).

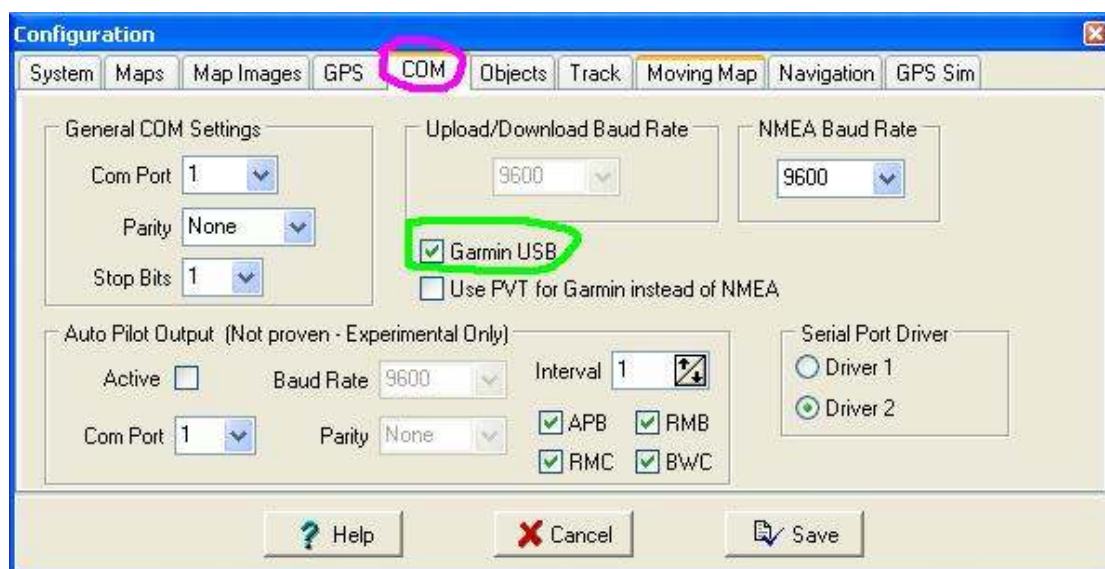


4. On the GPS tab (pictured above), set the GPS Make to "Garmin" and the GPS Model to "GPSMAP 60/60C/CS".

5. A USB info dialog box will be displayed (pictured below). Click “OK”.



6. Click the “COM” tab (pictured below). Ensure that the “Garmin USB” box is checked. No other settings matter. Click the “Save” button.



7. Click the “Garmin” menu item (pictured below) on Ozi’s main screen. To download a track, select “Get track from GPS”. To download waypoints, select “Get waypoints from GPS”. Data can also be sent to the GPS.

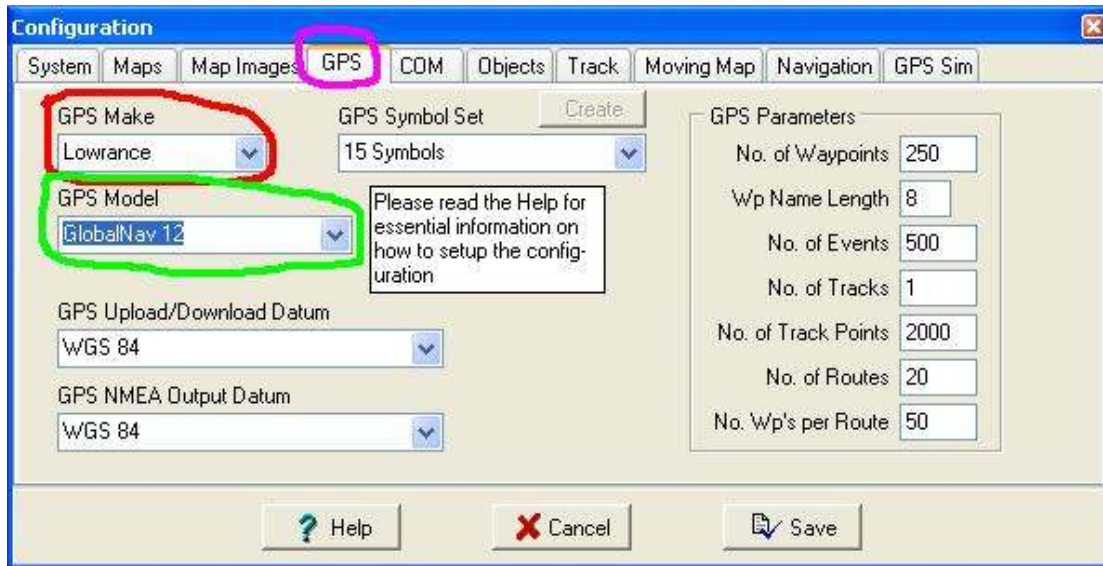


### **Downloading from a Lowrance GlobalNav12**

1. Plug the round end of the Lowrance cable into the back of the GPS unit. The connector may be covered with a plug or electrical tape.
2. If using the old team computer, connect the large end of the cable into the computer’s serial port.

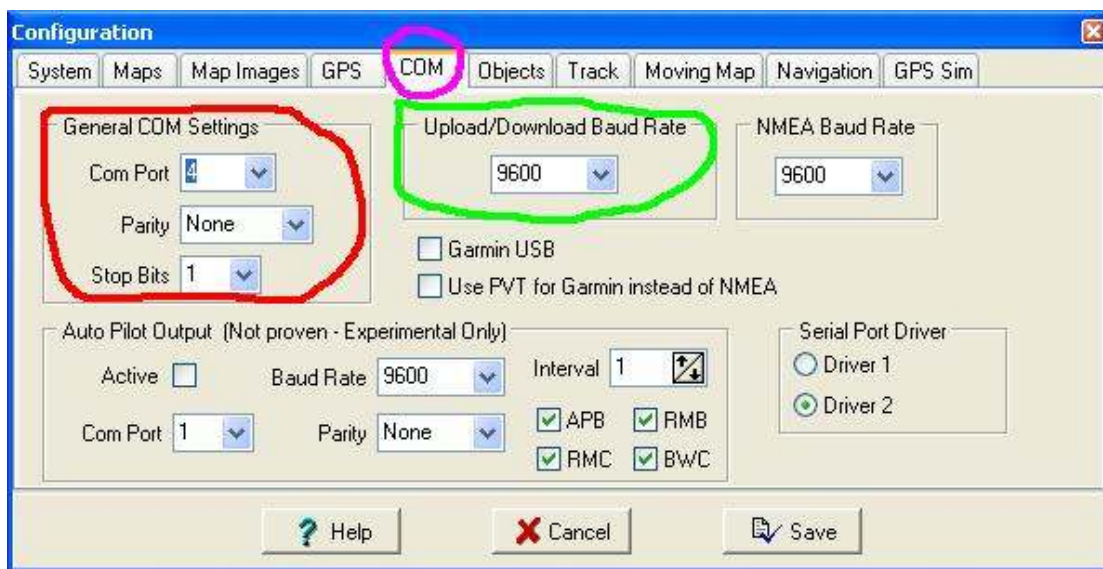
If using the new team computer, connect the large end of the cable to the USB-SERIAL adaptor (stored in a pocket in the computer's bag). Connect the other end of the adapter to a USB port on the back of the computer.

3. Turn the GPS on. Goto Ozi's "Configuration" menu by clicking the "File" menu and selecting "Configuration". Select the "GPS" tab from the Configuration page (pictured below).



4. On the GPS tab (pictured above), set the GPS Make to "Lowrance" and the GPS Model to "GlobalNav 12".

5. Click the "COM" tab (pictured below).



If using the new team computer, ensure Com Port is set to "4", Parity is set to "None", Stop Bits are set to "1" and Upload/Download Baud Rate is set to "9600". No other settings matter.

If using the old team computer, ensure Com Port is set to “1”, Parity is set to “None”, Stop Bits are set to “1” and Upload/Download Baud Rate is set to “9600”. No other settings matter.

Click the “Save” button.

6. Click the “Lowrance” menu item (pictured below) on Ozi’s main screen. To download a track, select “Get track from GPS”. To download waypoints, select “Get waypoints from GPS”. Data can also be sent to the GPS.



## **Troubleshooting**

Connecting to a GPS unit can be problematic.

### Lowrance issues

1. Ensure the unit is turned ON.
2. With the Lowrance’s, most problems are due to an improper COM port number. Remember that the USB-SERIAL adapter uses COM port #4, while the old team computer uses COM port #1.
3. Another Lowrance issue can be the Baud Rate. Team units are set to 9600 as that is the rate Ozi defaults to. Some personal units may be different. Check the unit’s baud rate to ensure it matches whatever you have Ozi set to.

### Garmin USB issues

1. Ensure the unit is turned ON.
2. Sometimes the USB driver needs to be re-installed. If this is the case, you will get an error that a USB unit cannot be found. If this is the case, contact Daryl or Sheldon.